

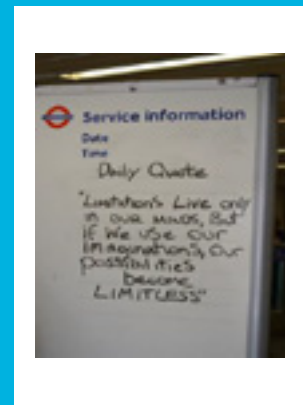


WINTER 2014

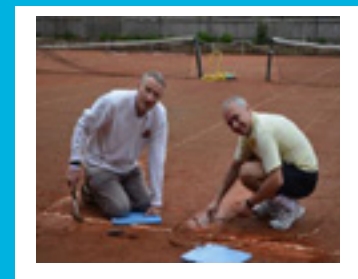
ST MARY'S NEWSLETTER

NEWSLETTER

Grace, one of our youngest members, makes an enthusiastic start to a work party



Railways have always been an inspiration to Ray Gale. Read more about this on page 2



At work and clay. Further pictures of the volunteers at work on page 3

Spotlight on Ray Gale!

We are always keen to get to know our members and have started this series with an article on Ray who joined St Mary's in the late sixties. He is a man with many pastimes and has been playing tennis since his middle teens!

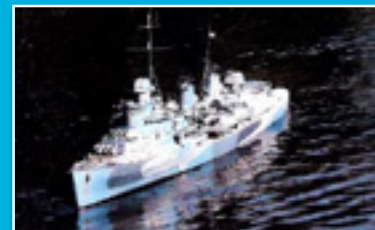
Croquet is a game where you hit a wooden ball with great skill and occasionally brute force; a game which Ray enjoyed playing at an early age on a sports field.

A brief absence from tennis in the nineties saw him taking to the air at the weekends, learning to fly gliders in Oxfordshire. Here, Ray learnt to stall a plane, drop the nose and speed towards the ground, force the glider out of its drive and resume flying, as if the move had not occurred. Solo flying was achieved in 1993, and he gained his wings.

A far smoother ride occurs with Ray's love of cycling; the first serious ride in his student days with friends, on a London to Paris return trip, via Lydd airport, and flying across to Le Touquet in a Bristol Freighter. Other cycle rides include riding alongside the River Danube in Austria and the delights of the Dutch cycle lanes.

Besides his passion for tennis and flying, is his gift for drawing and painting. Railways, becoming a loving subject in his drawings, turn into coloured screen prints and he regularly exhibits with the Guild of Railway Artists. Railways also come in three dimensional form as Ray builds '0' gauge models, built to run in the back garden. In more recent years, he has made various radio controlled model boats from scratch and sails them in Bushy Park, with a local modelling club. These range from Thames Sailing Barges to six foot long battle cruisers, for example, 'HMS Belfast'.

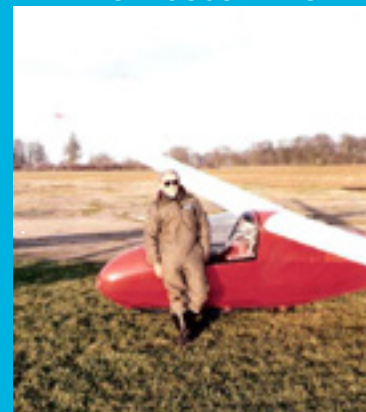
Overall, the camaraderie of fellow club members at St Mary's give Ray great pleasure and delight.



HMS Belfast in Bushy Park



The Bluebell Line

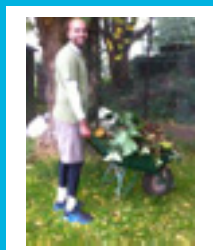
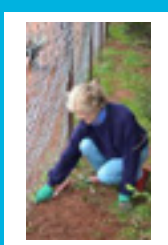
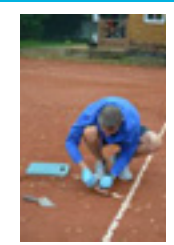
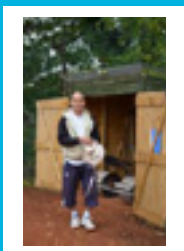
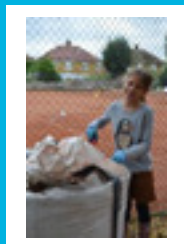


Solo gliding in Oxfordshire

Pullman c1923 built for the back garden



The October work parties were planned to maintain and improve the courts and grounds. Thanks to everyone who helped out.



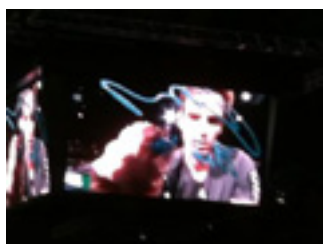
Mike McLeod, one of St Mary's honorary members, and a member in the seventies to nineties visited the club recently to see all of its new developments first hand.

News

We received very positive feedback from the family who hired the pavilion and grassed area for a tea party. "A lovely venue, we'll recommend it to our friends!"

The Management Committee is currently considering St Mary's Tennis Club vision and future development and has reviewed the membership feedback as a part of this.

British Tennis members can receive discounts to tennis tournaments such as the O2 World Finals and the March 2015 Davis Cup in Glasgow. Check the BTM newsletters.



Paris ATP October 30th
Andy Murray gives his victory signature after his match against Grigor Dimitrov